



# SERVICE BULLETIN # 99

12/16/08

## Cracked/Out of Round Brake Drums

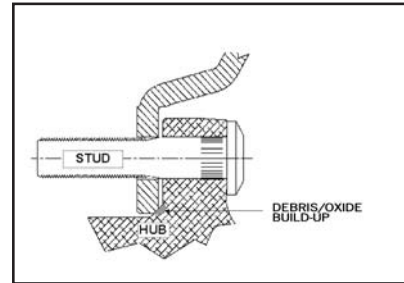
### Symptoms of drum mounting issues:

- A) Localized heat checking, blue/hard spots
- B) Vibration/shudder
- C) Crack(s) from pilot to mounting bolt hole(s)
- D) Loose wheels
- E) Indentations in pilot on drum

### Reasons for cracked/out of round brake drums:

#### A) Mating surfaces not clean

- 1. Debris in hub pilot radius
- 2. Galvanic corrosion in aluminum hub pilot radius (see picture) →



#### B) Improper installation

- 1. Drum not centered on hub pilots
- 2. Drum allowed to slip off hub pilot (see picture) →

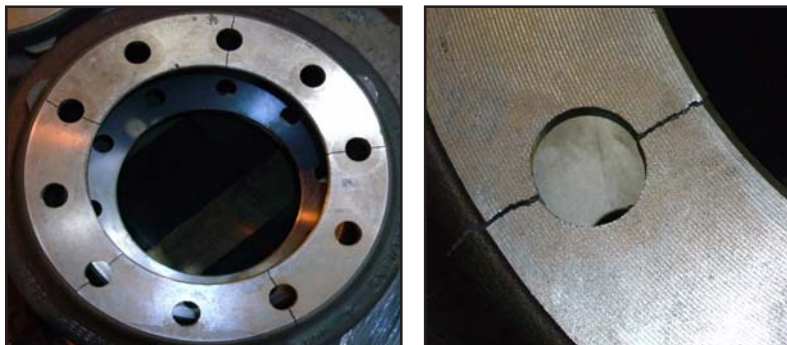


#### C) Drum being installed on hub with incorrect pilot diameter

#### D) Incorrect storage and or handling

- 1. Dropped or roughly handled drum
- 2. Storing drum on it's side

*(Examples of Cracked Drums)*



If you have any questions regarding this bulletin, please contact technical service at (256) 775-7514 or [engineering@webbwheel.com](mailto:engineering@webbwheel.com).